

**DATA SHEET-V3**  
**REMBRANDT® HMGA1 BREAK APART**  
**FISH DETECTION**  
**RESEARCH USE ONLY (RUO)**

**RUO**

Ref	<b>C822K.2030.05</b>	$\Sigma$	5 T
	<b>C822K.2030.10</b>	$\Sigma$	10 T

**Intended use**

- I. The REMBRANDT® HMGA1 break apart FISH detection assay is intended for the detection of a translocation of the HMGA1 gene on chromosome 6, locus p21.31, by means of *in situ* hybridization.
- II. The REMBRANDT® HMGA1 break apart FISH detection assay is intended for the detection of a translocation of the HMGA1 gene on chromosome 6 in fixed cells. The clinical interpretation of the results should not be established on the basis of this test.
- III. The intended users are qualified laboratory employees in cytology and/or pathology. The product is intended for professional use.

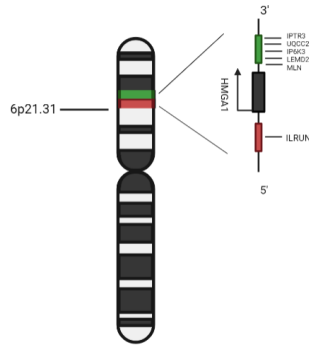
**Clinical relevance**

The HMGA1 break apart probe is intended to identify rearrangements of the HMGA1 region, which lies on chromosome 6 at location p21.31. The high mobility group AT-hook 1 (HMGA1) gene encodes a chromatin-associated protein involved in the regulation of retroviruses into chromosomes, the metastatic progression of cancer cells and gene transcription (NCBI, 2022). HMGA1 is known to have an elevated level of expression in many tumour types from epithelial or mesenchymal origin, in which it causes cell proliferation (Y. Wang et al., 2019). HMGA1 translocations are found in lipoma's, in which LPP is found as a fusion partner. Further fusion partners are largely unknown (X. Wang et al., 2010). The REMBRANDT® HMGA1 break apart FISH detection assay is able to distal and proximal target the HMGA1 gene on chromosome at location 6p21.31 to identify rearrangements of these region.

**Probe specification**

The REMBRANDT® HMGA1 break apart probe mix consists of a 391 kb probe distal from the HMGA1 break point region and a 175 kb probe proximal from the HMGA1 break point region. The distal region is detected by green fluorescence (AF488) and the proximal region is detected by orange fluorescent detection (AF555). The REMBRANDT® HMGA1 break apart FISH detection assay is able to detect

translocation of the HMGA1 gene on chromosome 6, by means of direct *in situ* hybridization. The REMBRANDT® HMGA1 break apart probes are pre-mixed in a hybridization mixture (formamide, dextran sulphate and SSC) and are ready to use solutions.



**Test principle**

In a fluorescent *in situ* hybridization assay, a double stranded DNA probe labelled with a fluorochrome is used. The labelled DNA probe is diluted in a hybridization mixture. The hybridization mixture containing the DNA probe is added to the specimen. A co-denaturation will ensure that the genomic DNA and the probe DNA become single stranded. After denaturation, the probe DNA is able to hybridize to its complementary target sequences in the cells. In the REMBRANDT® HMGA1 break apart FISH detection assay, the fluorochrome is attached to the probe and the signals can be visualized directly by fluorescent microscopy after hybridization.

**Reagents provided**

Product name	Product number	Amount
Labelled probes (depending on size choice)	C822P.2030.05 or	$\Sigma$ 5 T
REMBRANDT® HMGA1 break apart FISH probe mix	C822P.2030.10	
		$\Sigma$ 10 T
REMBRANDT® Pepsin powder	R011R.0000	1 g
REMBRANDT® Pepsin diluent	R018R.0000	15 ml
REMBRANDT® PanWash 4, 25X SSC	R025R.0000	4x 15 ml

## Assay procedure

REMBRANDT® HMGA1 break apart FISH detection assay procedure for cytological specimen.

- I. Incubate slides in pre-heated proteolytic work solution (prepare according to section 1.9 of Manual-FISH) (R011R.000 + R018R.000) at 37 °C (100 µg/ml) for 15 minutes followed by a brief rinsing in 0.01M HCl (1x 2 minutes) and subsequent rinses in PBS (2x 1 minute)
- II. Flush wash slides in deionised water, followed by dehydration in graded ethanol series (ethanol 70%, 96%, 96%, 100%, 100%) 1 minute each and air-dry slides for 15 minutes

**Do not treat more than 5 slides at the same time, because the temperature of the pre-heated solutions may drop dramatically, thus causing incomplete pre-treatment. Additionally, allow the slides to air-dry as recommended; otherwise sections will be lost.**

- III. Homogenize probe solution (C822P.2030.YY) a spin briefly. Apply 15 µl of probe solution to each specimen. Cover all specimens with a cover slip (avoid air bubbles). Denature slides on a 80 °C hotplate or other heating device for 3 minutes

**Work in a pre-set order to ensure that all slides have been incubated at 80 °C for the exact same time. Do not denature more than 5 slides at the same time, the temperature of the heating device may drop dramatically, thus causing incomplete denaturation.**

- IV. Transfer the slides into a moist environment and incubate for 16 hours at 37 °C.
- V. Remove coverslips by soaking the slides in PBS at room temperature
- VI. Incubate the slides in diluted, pre-heated PanWash 4 (R025R.000) (prepare according to section 1.9 of Manual-FISH)

**Do not incubate more than 5 slides at the same time in PanWash 4, the temperature of the PanWash 4 may drop dramatically, causing wrong stringency conditions.**

- VII. Incubate the slides in PBS at room temperature for 1 minute
- VIII. Dehydrate the slides in graded ethanol series (70%, 96%, 96%, 100%, 100%) 1 minute each and air-dry the slides for 15 minutes (in the dark)

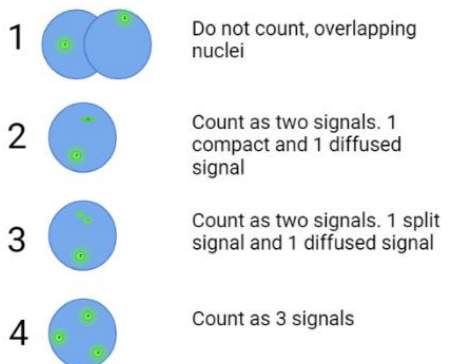
## Interpretation of results



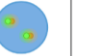



Hybridization of the REMBRANDT® HMGA1 break apart probes is viewed using a fluorescence microscope equipped with appropriate excitation and emission filters for orange detection:  $\lambda_{exc}$  555 nm,  $\lambda_{em}$  572 nm. Allowing visualization of orange fluorescent signal concentrated at the proximal region in combination with green fluorescent signals representing the distal region from the HMGA1 break point region. The fluorescently-stained green and orange loci of chromosome 6 stand out brightly against the general fluorescence of the nucleus.

The HMGA1 break apart FISH procedure enables observation of a possible detection of translocation of the HMGA1 gene on chromosome 6 within the nuclei.

Analyse the fluorescent signals in the interphase nucleus using a 40X or 63X magnification. Objectives with higher magnification (eg, 63X or 100X) should be used to verify or resolve questions about split or diffused signals. Enumerate at least 100 nuclei per slide for accurate analysis.

- Two signals in close proximity and approximately the same sizes but not connected by a visible link are counted as 2 signals.
- Count a diffuse signal as 1 signal if diffusion of the signal is contiguous and within an acceptable boundary.
- Two small signals connected by a visible link are counted as 1 signal.
- Count nuclei with 0 signals only if there are other nuclei with at least 1 signal present in the field of view. If the accuracy of the enumeration is in doubt, repeat the enumeration in another area of the slide.
- Do not enumerate nuclei with uncertain signals (Marilyn S., 2017)



	Green filter set (Aexc 492 nm, Aem 517)	Orange filter set (Aexc 555 nm, Aem 572)	Merged picture of Dual filter set
Normal cells			
Re-arrangement of HMGA1 gene			

Other signal distribution may be observed in some abnormal samples which might result in a different signal pattern than described above. Unexpected signal patterns should be further investigated.

## Performance characteristics

### Analytical Sensitivity and Specificity

The analytical sensitivity and specificity were investigated within PanPaths analytical performance assessment. Precision was investigated for the REMBRANDT® HMGA1 break apart FISH detection assay and results are available upon request.

### Analytical sensitivity

The analytical sensitivity was determined in three levels. The normal cut-off percentage was determined based on assessment of 200 individual nuclei in two samples of healthy interphase lymphocytes from peripheral blood. The beta inversion was used to determine the percentage of normal-cut off. For the noise-to-signal percentage, the noise and signal values were determined for 100 signals in interphase lymphocytes from peripheral blood of two independent samples. The differences between noise and signal were evaluated using a 95% confidence interval. For the hybridization efficiency, 200 individual nuclei were assessed for the presence of FISH signals.

Performance characteristic	Outcome
Normal cut-off percentage	9%
Noise-to-signal cut-off percentage	24%
Hybridization efficiency	99%

### Analytical specificity

The analytical specificity was determined in two levels. The theoretical specificity was determined by sequencing analysis of the probe DNA and mapping on Hg38. The practical specificity was determined by assessing the hybridization pattern in metaphase chromosomes of interphase lymphocytes from peripheral blood.

Performance characteristic	Outcome
Theoretical specificity	Mapped on chromosome 6 the locus p21.31, distal and proximal from the HMGA1 break point region

## Limitations of Procedure

i) The REMBRANDT® HMGA1 break apart FISH detection assay is solely applicable for the detection of a translocation of the HMGA1 gene, which may be present in cell preparations (cytological specimen i.e. interphase lymphocytes from peripheral blood samples).

ii) Either human tissue sections or human cytological preparations may be used. Samples must be fixed in buffered formalin or alcohol. In tissue sections are required, the sections should be prepared in a 4 µm thickness. Furthermore, the tissues should be glued to the glass slides with a bio-adhesive (e.g. organ silane), dried at room temperature, subsequently dried at 37 °C overnight and lastly completely deparaffinized in xylene and alcohol series and air dried.

iii) Cytological specimen should be prepared as required by the user, fixed with cytological fixation agent, rinsed in distilled water prior to the ISH procedure and air dried.

iv) Many factors can influence the performance of the ISH procedure. Failure in detection can be due to i.e. improper sampling, handling, the time lapse between tissue removal and fixation, the size of the tissue specimen in the fixation medium, the fixation time, processing fixed tissue, the thickness of the section, the bio-adhesive on the slide, deparaffinisation procedure, incubation times, proteolytic pre-treatment, detection reagents, incubation temperatures and interpretation of results.

v) The performance of the ISH procedure is also affected by the sensitivity of the method and the presence of the HMGA1 gene. In case the limit of the sensitivity is reached a false negative reaction may be the result.

vi) The REMBRANDT® HMGA1 break apart FISH detection assay results should not be relied on in case the sampling, sampling method, sample quality, sample preparation, reagents used, controls and procedure followed are not optimal or as described the working protocols.

vii) The clinical interpretation of the results should not be established on the basis of a single test result. A precise diagnosis should take into consideration clinical history as well as data obtained from other molecular test (i.e. WGS).

viii) Therapeutic considerations based on the result of this test alone should not be taken. Results should be verified by other traditional diagnostic methods such as but not limited to clinical history, symptoms, as well as morphological data.

ix) The medical profession should be aware of risks and factors influencing the fluorescent signal intensity while interpreting the test result. Microscopy settings might influence the signal intensity and/or interpretation.

x) Laboratory personnel performing the test should be trained and knowledgeable to be able to interpret the test results.

## Storage and handling

Store kit and its contents at 2-8°C. Store the dissolved and aliquoted reagents at recommended temperatures. When used and stored as indicated, the kit is stable until the expiry date printed on the box.

Product	Product number	Storage conditions
REMBRANDT® HMGA1 break apart FISH probe mix	C822P.2030	2-8 °C
REMBRANDT® Pepsin powder	R011R.0000	Powder: 2-25°C, ambient temperature Dissolved: -20°C
REMBRANDT® Pepsin diluent	R018R.0000	Concentrated solution and diluted: 2-25°C, ambient temperature
REMBRANDT® PanWash 4, 25X SSC	R025R.0000	Concentrated solution and diluted: 2-25°C, ambient temperature
REMBRANDT® Fluorescent mounting medium	Z000R.0050	2-8 °C



## Hazard statements

H315 - Causes skin irritation  
H319 - Causes serious eye irritation  
H351 - Suspected of causing cancer  
H360D - May damage the unborn child  
H373 - May cause damage to organs through prolonged or repeated exposure

## Precautionary Statements

P202 - Do not handle until all safety precautions have been read and understood  
P280 - Wear protective gloves/protective clothing/eye protection/face protection  
P302 + P352 - IF ON SKIN: Wash with plenty of water and soap  
P305 + P351 + P338 - IF IN EYES: Rinse cautiously with water for several minutes. Remove contact lenses, if present and easy to do. Continue rinsing  
P308 + P313 - IF exposed or concerned: Get medical advice/attention  
P362 + P364 - Take off contaminated clothing and wash it before reuse  
P405 - Store locked up

## Additional information

### Product in combination with other devices

The REMBRANDT® DNA probes are intended for stand-alone usage. The assay is intended to be used in combination with standard cytological preparation methods, hot plate(s), stove(s), incubation device(s), water bath(s), temperature and incubation time control(s), proteolytic-, detection- and other reagents (not supplied with this reagent) and a microscope. The combination has been tested and validated. Since the standard cytological preparation methods, hot plate(s), stove(s), incubation device(s), water bath(s), temperature controls, incubation time control(s) and other not supplied reagents such as but not limited to proteolytic reagents, detection reagents and a microscope is not combined with the device as a product, conformity with the essential requirements is not applicable. Assay validation criteria are mentioned in 'Interpretation of the Results' and are also depending on clinical state of the sample, which may influence the validation criteria.

For additional information regarding the REMBRANDT® assays, a manual is included which specifies the following subjects:

- Controls
- Materials required but not included
- Storage and shelf-life
- Performance precautions
- Preparations of reagents
- Specimen collection
- Quality control
- Trouble shooting guide

## Technical assistance

For technical assistance regarding the products performance, please contact [info@panpath.nl](mailto:info@panpath.nl) or call +31 495499090. Visit our website for reprints of datasheets or additional documentation. [www.panpath.nl](http://www.panpath.nl)

## Literature list

- 'Marilyn S., A. 'Margaret J., B. ' H. J., L. (2017). *The AGT Cytogenetics Laboratory Manual* (4th Edition).  
NCBI. (2022). *HMGA1 high mobility group AT-hook 1 [Homo sapiens (human)]*.  
Wang, X., Zamolyi, R. Q., Zhang, H., Pannain, V. L., Medeiros, F., Erickson-Johnson, M., Jenkins, R. B., & Oliveira, A. M. (2010). Fusion of HMGA1 to the LPP/TPRG1 intergenic region in a lipoma identified by mapping paraffin-embedded tissues. *Cancer Genetics and Cytogenetics*, 196(1), 64–67.  
<https://doi.org/10.1016/j.cancergencyto.2009.09.003>  
Wang, Y., Hu, L., Zheng, Y., & Guo, L. (2019). HMGA1 in cancer: Cancer classification by location. *Journal of Cellular and Molecular Medicine*, 23(4), 2293–2302. <https://doi.org/10.1111/jcmm.14082>

*Disclaimer: This document is valid until the product expiry  
on the kit label*

**DATA SHEET-V2**  
**REMBRANDT® HMGA1 BREAK APART**  
**ISH DETECTION**  
**RESEARCH USE ONLY (RUO)**

**RUO**

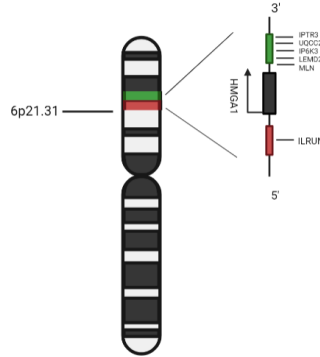
**Pan**  
**Path**

Ref	C822K.0199.05	∑	5 T
	C822K.0199.10	∑	10 T

on chromosome 6, locus p21.31, by means of *in situ* hybridization. The REMBRANDT® HMGA1 break apart probes are pre-mixed in a hybridization mixture (formamide, dextran sulphate and SSC) and are ready to use solutions.

**Intended use**

- I. The REMBRANDT® HMGA1 break apart ISH detection assay is for research use only, and is intended for the detection of a translocation of the HMGA1 gene on chromosome 6, locus p21.31 in fixed cells.
- II. The REMBRANDT® HMGA1 break apart ISH detection assay kit is a qualitative assay for the detection of a translocation of the HMGA1 gene on chromosome 6, locus p21.31. A clinical diagnosis should not be established based on the performance of this test.
- III. The intended users are qualified laboratory employees in cytology and/or pathology. The product is intended for professional use.



**Clinical relevance**

The HMGA1 probe is intended to detect a translocation of the HMGA1 gene on chromosome 6, locus p21.31. The high mobility group AT-hook 1 (HMGA1) gene encodes a chromatin-associated protein involved in the regulation of retroviruses into chromosomes, the metastatic progression of cancer cells and gene transcription (NCBI, 2022). HMGA1 is known to have an elevated level of expression in many tumour types from epithelial or mesenchymal origin, in which it causes cell proliferation (Y. Wang et al., 2019). HMGA1 translocations are found in lipoma's, in which LPP is found as a fusion partner. Further fusion partners are largely unknown (X. Wang et al., 2010). The REMBRANDT® HMGA1 break apart ISH detection assay is able to target the 6p21.31 locus.

**Probe specification**

The REMBRANDT® HMGA1 break apart probe mix consists of a 391 kb probe distal from the HMGA1 break point region and a 175 kb probe proximal from the REMBRANDT® HMGA1 break point region. The distal probe is conjugated to biotin and the proximal probe is conjugated to digoxigenin. The REMBRANDT® HMGA1 break apart ISH detection assay is able to detect a translocation of the HMGA1 gene

**Test principle**

In an *in situ* hybridization assay, a double stranded DNA probe labelled with a hapten is used. The labelled DNA probe is diluted in a hybridization mixture. The hybridization mixture containing the DNA probe is added to the specimen. A co-denaturation will ensure that the genomic DNA and the probe DNA become single stranded. After denaturation, the probe DNA is able to hybridize to its complementary target sequences in the cells. In the REMBRANDT® HMGA1 break apart detection assay, the haptens are attached to the probe and the signals can be visualized after detection by corresponding antibodies by fluorescent or brightfield microscopy.

**Reagents provided**

Product name	Product number	Amount
Labelled probes (depending on size choice)		
REMBRANDT® HMGA1 break apart	C822P.0199.05	∑ 5 T
or		
REMBRANDT® HMGA1 break apart ISH probe mix	C822P.0199.10	∑ 10 T
REMBRANDT® Pepsin powder	R011R.0000	1 g
REMBRANDT® Pepsin diluent	R018R.0000	15 ml
REMBRANDT® Pre-treatment solution	R026R.0000	15 ml
REMBRANDT® PanWash 4, 25X SSC	R025R.0000	4x 15 ml

## Assay procedure

REMBRANDT® HMGA1 break apart ISH detection assay procedure for cytological specimen and FFPE tissue sections.

minutes in 2x SSC at 42 °C. For cytological specimen, subsequently incubate 2x 5 minutes in 0.1x SSC at 61 °C.

- I. Specimen collection: for a detailed description of the specimen collection for cytological specimen or FFPE tissue sections see section 2.1 Specimen collection of the Manual ISH.
- II. For FFPE tissue sections, after dewaxing, place slides in jar with pre-treatment solution (R026R.0000) in microwave set at i.e. 900W and incubate up until boiling. Subsequently, reset microwave at 180W and incubate for 10 minutes, followed by cooling down for 20 minutes at room temperature. Flush wash slides in deionised water.
- III. Incubate slides in pre-heated proteolytic work solution (prepare according to section 1.9 and 1.10 of Manual ISH (R011R.000 + R018R.000)) at 37 °C. Paraffin-embedded sections (1.25 mg/ml) or cytological specimen (100 µg/ml) for 15 minutes.
- IV. Flush wash slides in deionised water, followed by dehydration in graded ethanol series (ethanol 70%, 96%, 96%, 100%, 100%) 1 minute each and air-dry slides for 15 minutes.

**Do not treat more than 5 slides at the same time, because the temperature of the pre-heated solutions may drop dramatically, thus causing incomplete pre-treatment. Additionally, allow the slides to air-dry as recommended; otherwise sections will be lost.**

- V. Homogenize probe solution (C822P.0199.YY) and spin briefly. Apply 10-15 µl of probe solution to each specimen. Cover all specimens with a cover slip (avoid air bubbles). Denature slides on a 80 °C hotplate or other heating device, 3 minutes for cytological specimen and 10 minutes for FFPE tissue sections.

**Work in a pre-set order to ensure that all slides have been incubated at 80 °C for the exact same time. Do not denature more than 5 slides at the same time, the temperature of the heating device may drop dramatically, thus causing incomplete denaturation.**

- VI. Transfer the slides into a moist and dark environment and incubate for 16 hours at 37 °C.
- VII. Remove coverslips by soaking the slides in PBS at room temperature.
- VIII. Incubate the slides in diluted, pre-heated PanWash 4 (R025R.0000) (prepare according to section 1.9 of Manual-ISH). For cytological specimen and FFPE tissue sections, 2x 5

**Do not incubate more than 5 slides at the same time in PanWash 4, the temperature of the PanWash 4 may drop dramatically, causing wrong stringency conditions.**

- IX. Appropriate detection system should be evaluated by the end-user. Recommended detection systems are listed below

Digoxigenin detection	Biotin detection
R003R.0000 REMBRANDT® Sheep aDig-AP conjugate	R041R.0000 REMBRANDT® Goat aBio-AP Fab conjugate
R004R.0000 REMBRANDT® Sheep aDig-HRP conjugate	R042R.0000 REMBRANDT® Goat aBio-HRP Fab conjugate
AP detection	HRP detection
R008R.0000 REMBRANDT® NBT/BCIP substrate	R007R.0000 REMBRANDT® AEC substrate + R010R.0000 REMBRANDT® AEC buffer

## Interpretation of results

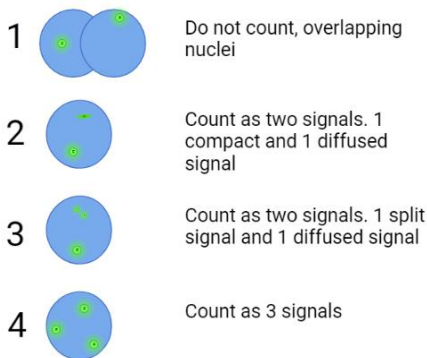
Hybridization of the REMBRANDT® HMGA1 break apart probes is viewed using a fluorescence or brightfield microscope equipped with appropriate excitation and emission filters. Allowing visualization of signals concentrated at the proximal region in combination with signals representing the distal region from the HMGA1 gene, detecting a possible translocation of the HMGA1 gene on chromosome 6, locus p21.31. The enumeration of 6p21.31 copy numbers conducted by microscopic examination of interphase nuclei. The HMGA1 break apart ISH procedure enables observation of a possible detection of translocation of the HMGA1 gene on chromosome 6 within the nuclei.

Analyse the signals in the interphase nucleus using a 40X or 63X magnification. Objectives with higher magnification (eg, 63X or 100X) should be used to verify or resolve questions about split or diffused signals. Enumerate at least 100 nuclei per slide for accurate analysis.

- Two signals in close proximity and approximately the same sizes but not connected by a visible link are counted as 2 signals.
- Count a diffuse signal as 1 signal if diffusion of the signal is contiguous and within an acceptable boundary.
- Two small signals connected by a visible link are counted as 1 signal.
- Enumerate the number of nuclei with 0, 1, 2, 3, 4, or >4 signals. Count nuclei with 0 signals only if there are other

nuclei with at least 1 signal present in the field of view. If the accuracy of the enumeration is in doubt, repeat the enumeration in another area of the slide.

•Do not enumerate nuclei with uncertain signals



### Performance characteristics

The REMBRANDT® HMGA1 break apart ISH detection assay was analytically validated for REMBRANDT® HMGA1 break apart FISH detection. The results of the direct fluorescent assay are shown. However, for the REMBRANDT® HMGA1 break apart ISH detection assay, the detection system may influence the performance characteristics and the dual colour HMGA1 assay in combination with different detection systems should be evaluated carefully by the end-user.

### Analytical sensitivity

The analytical sensitivity was determined in three levels. The normal cut-off percentage was determined based on assessment of 200 individual nuclei in two samples of healthy interphase lymphocytes from peripheral blood. The beta inversion was used to determine the percentage of normal-cut off. For the noise-to-signal percentage, the noise and signal values were determined for 100 signals in interphase lymphocytes from peripheral blood of two independent samples. The differences between noise and signal were evaluated using a 95% confidence interval. For the hybridization efficiency, 200 individual nuclei were assessed for the presence of ISH signals.

Performance characteristic	Outcome
Normal cut-off percentage	9%
Noise-to-signal cut-off percentage	24%
Hybridization efficiency	99%

### Analytical specificity

The analytical specificity was determined in two levels. The theoretical specificity was determined by sequencing analysis of the probe DNA and mapping on Hg38. The practical specificity was determined by assessing the

hybridization pattern in metaphase chromosomes of interphase lymphocytes from peripheral blood.

Performance characteristic	Outcome
Theoretical specificity	Mapped on chromosome 6 the locus p21.31, distal and proximal from the HMGA1 gene
Practical specificity	100%

### Limitations of Procedure

i) The REMBRANDT® HMGA1 break apart ISH detection assay is solely applicable detection of a translocation of the HMGA1 gene on chromosome 6, locus p21.31, which may be present in cell preparations (cytological specimen i.e. interphase lymphocytes from peripheral blood samples).

ii) Either human tissue sections or human cytological preparations may be used. Samples must be fixed in buffered formalin or alcohol. In tissue sections are required, the sections should be prepared in a 4 µm thickness. Furthermore, the tissues should be glued to the glass slides with a bio-adhesive (e.g. organ silane), dried at room temperature, subsequently dried at 37 °C overnight and lastly completely deparaffinized in xylene and alcohol series and air dried.

iii) Cytological specimen should be prepared as required by the user, fixed with cytological fixation agent, rinsed in distilled water prior to the ISH procedure and air dried.

iv) Many factors can influence the performance of the ISH procedure. Failure in detection can be due to i.e. improper sampling, handling, the time lapse between tissue removal and fixation, the size of the tissue specimen in the fixation medium, the fixation time, processing fixed tissue, the thickness of the section, the bio-adhesive on the slide, deparaffinisation procedure, incubation times, proteolytic pre-treatment, detection reagents, incubation temperatures and interpretation of results.

v) The performance of the ISH procedure is also affected by the sensitivity of the method and the presence of the HMGA1 gene. In case the limit of the sensitivity is reached a false negative reaction may be the result.

vi) The REMBRANDT® HMGA1 break apart ISH detection assay results should not be relied on in case the sampling, sampling method, sample quality, sample preparation, reagents used, controls and procedure followed are not optimal or as described the working protocols.

vii) The medical profession should be aware of risks and factors influencing the fluorescent signal intensity while interpreting the test result. Microscopy settings might influence the signal intensity and/or interpretation.

viii) Laboratory personnel performing the test should be trained and knowledgeable to be able to interpret the test results.



## Storage and handling

Store kit and its contents at 2-8°C. Store the dissolved and aliquoted reagents at recommended temperatures. When used and stored as indicated, the kit is stable until the expiry date printed on the box.

Product	Product number	Storage conditions
REMBRANDT® HMGA1 break apart ISH probe mix	C822P.0199	2-8 °C
REMBRANDT® PanWash 4, 25X SSC	R025R.0000	Concentrated solution and diluted: 2-25°C, ambient temperature
REMBRANDT® Pepsin powder	R011R.0000	Powder: 2-25°C, ambient temperature Dissolved: -20°C
REMBRANDT® Pepsin diluent	R018R.0000	Concentrated solution and diluted: 2-25°C, ambient temperature
REMBRANDT® Pre-treatment solution	R026R.0000	Concentrated solution and diluted: 2-25°C, ambient temperature



## Hazard statements

H315 - Causes skin irritation  
H319 - Causes serious eye irritation  
H351 - Suspected of causing cancer  
H360D - May damage the unborn child  
H373 - May cause damage to organs through prolonged or repeated exposure

## Precautionary Statements

P202 - Do not handle until all safety precautions have been read and understood  
P280 - Wear protective gloves/protective clothing/eye protection/face protection  
P302 + P352 - IF ON SKIN: Wash with plenty of water and soap  
P305 + P351 + P338 - IF IN EYES: Rinse cautiously with water for several minutes. Remove contact lenses, if present and easy to do. Continue rinsing  
P308 + P313 - IF exposed or concerned: Get medical advice/attention  
P362 + P364 - Take off contaminated clothing and wash it before reuse  
P405 - Store locked up

## Additional information

### Product in combination with other devices

The REMBRANDT® DNA probes are intended for stand-alone usage. The assay is intended to be used in combination with standard cytological preparation methods, hot plate(s), stove(s), incubation device(s), water bath(s), temperature and incubation time control(s), proteolytic-, detection- and other reagents (not supplied with this reagent) and a microscope. The combination has been tested and validated. Since the standard formalin fixed, paraffin embedded tissue blocks, standard tissue freezing, tissue sectioning (microtome), standard cytological preparation methods, hot plate(s), stove(s), incubation device(s), water bath(s), temperature controls, incubation time control(s) and other not supplied reagents such as but not limited to proteolytic reagents, detection reagents and a microscope is not combined with the device as a product, conformity with the essential requirements is not applicable. Assay validation criteria are mentioned in 'Interpretation of the Results' and are also depending on the target load, which may influence the validation criteria.

For additional information regarding the Rembrandt® assays, a manual is included which specifies the following subjects:

- Controls
- Materials required but not included
- Storage and shelf-life
- Performance precautions
- Preparations of reagents
- Specimen collection
- Quality control
- Trouble shooting guide

## Technical assistance

For technical assistance regarding the products performance, please contact [info@panpath.nl](mailto:info@panpath.nl) or call +31 495499090. Visit our website for reprints of datasheets or additional documentation. [www.panpath.nl](http://www.panpath.nl)

## Literature list

- 'Marilyn S., A. 'Margaret J., B. ' H. J., L. (2017). *The AGT Cytogenetics Laboratory Manual* (4th Edition). NCBI. (2022). *HMGA1 high mobility group AT-hook 1 [Homo sapiens (human)]*.
- Wang, X., Zamolyi, R. Q., Zhang, H., Pannain, V. L., Medeiros, F., Erickson-Johnson, M., Jenkins, R. B., & Oliveira, A. M. (2010). Fusion of HMGA1 to the LPP/TPRG1 intergenic region in a lipoma identified by mapping paraffin-embedded tissues. *Cancer Genetics and Cytogenetics*, 196(1), 64–67. <https://doi.org/10.1016/j.cancergencyto.2009.09.003>
- Wang, Y., Hu, L., Zheng, Y., & Guo, L. (2019). HMGA1 in cancer: Cancer classification by location. *Journal*

of *Cellular and Molecular Medicine*, 23(4), 2293–2302. <https://doi.org/10.1111/jcmm.14082>

*Disclaimer: This document is valid until the product expiry on the kit label*